



Contents lists available at SCCE

Journal of Soft Computing in Civil Engineering

Journal homepage: www.jsoftcivil.com



An Artificial Intelligence Approach for Tunnel Construction Performance

Soo Kiem Eng¹, Biao He^{1*} , Masoud Monjezi², Ramesh Murlidhar Bhatawdekar^{3,4}

1. Department of Civil Engineering, Faculty of Engineering, University of Malaya, Kuala Lumpur, 50603, Malaysia

2. Faculty of Engineering, Tarbiat Modares University, Tehran, Iran

3. Institute of Smart Infrastructure and Innovative Construction (ISiC), Faculty of Civil Engineering, Universiti Teknologi Malaysia, Skudai 81310, Johor Bahru, Johor, Malaysia

4. Department of Mining Engineering, Indian Institute of Technology, Kharagpur 721302 West Bengal, India

Corresponding author: s2005282@siswa.um.edu.my

 <https://doi.org/10.22115/SCCE.2023.352867.1492>

ARTICLE INFO

Article history:

Received: 22 July 2022

Revised: 22 December 2022

Accepted: 31 January 2023

Keywords:

ANN;

GMDH;

TBM performance;

Penetration rate.

ABSTRACT

As massive tunneling projects become more and more popular, predicting the performance of Tunnel Boring Machine (TBM) has been a problem that arose recently. A TBM is a modern piece of machinery that is specially assembled to excavate a tunnel more efficiently and safely. However, the performance of TBM is very difficult to estimate due to the different geological formations and geotechnical factors. This research aims to predict the penetration rate (PR) of TBM utilizing statistical and artificial intelligence methods that are based on the rock mass and rock material properties: rock mass rating, rock quality designation, and rock strength. To achieve this goal, we used two neural network-based models: artificial neural network (ANN) and group method of data handling (GMDH), to forecast the TBM PR values. Then, we compared the performance of these two models using the well-known indices and a ranking system and selected the model with the highest degree of performance. As a result, an ANN model with one hidden layer and seven neurons showed the highest level of capability in predicting TBM PR. Correlation coefficient values of 0.947 and 0.921 for the training and testing phases, respectively, were obtained for the best model in this study. Our research can serve as a fundamental study for future geotechnical engineers or researchers who would like to predict TBM performance with similar rock mass and material properties to this study.

How to cite this article: Eng SK, He B, Monjezi M, Bhatawdekar RM. An artificial intelligence approach for tunnel construction performance. *J Soft Comput Civ Eng* 2023;7(2):138–154. <https://doi.org/10.22115/scce.2023.352867.1492>

2588-2872/ © 2023 The Authors. Published by Pouyan Press.

This is an open access article under the CC BY license (<http://creativecommons.org/licenses/by/4.0/>).



1. Introduction

Mechanized tunneling encompasses any tunneling methods that use mechanical excavation tools such as teeth, picks, or discs. Using tunnel boring machines (TBMs) to excavate and build support structures is the best example of mechanized tunneling. However, shaft builders (vertical boring machines) and boom-type roadheaders are also employed for mechanized tunneling. Using a TBM can reduce the amount of caving in a tunnel, reduce disturbance to the surrounding area, and require fewer workers compared to conventional methods [1,2]. Therefore, accurate prediction of TBM performance can significantly reduce the likelihood associated with the high capital cost and tunneling excavation time or schedule [3]. During the past decades, many researchers have employed different techniques to predict TBM performance. These techniques mainly involve three categories, i.e., 1) theoretical, 2) empirical or statistical, and 3) artificial intelligence (AI).

In terms of theoretical analysis, different approaches have been introduced to solve problems of TBM performance (e.g., [4–8]). In general, the theoretical approaches achieve predicting PR by analyzing the cutting forces acting on disc cutters with the help of force equilibrium equations (Laboratory cutting tests). Since TBM disc cutters confront rock mass conditions in the field, theoretical models are hampered by the absence of this information. In addition, the equipment needed for these experiments may not be accessible at every research facility around the globe [9]. It may be necessary to make modifications to TBM performance data if such equipment is not available to accurately estimate the TBM's performance in the absence of such equipment.

As for the empirical or statistical models, they predominantly use predictors (inputs) to forecast the TBM performance (output) using mathematical relationships. A linear multiple regression (LMR) equation was introduced in research by Hamidi et al. [10] to forecast the boreability of TBM in 8.5 km of Zagros long tunnel in which the construction was taking place in sedimentary rock. In another regression analysis, Hassanpour et al. [11] proposed a multiple regression analysis to establish the relationship between the field penetration index (FPI) and geological parameters. The study was based on the Manapouri tunnel in New Zealand and three other projects in Iran. Yagiz [12] performed a series of simple regressions to find the best correlation parameters for FPI. Jing et al. [13] developed a statistical model to correlate the penetration rate (PR) with rock mass parameters. The study was performed based on the data from the Songhua River Water Supply Project in China where 7.3 km of a tunnel in a limestone region was excavated using TBM. Although statistical models are known for their simplicity and efficiency, their performance capacities are low, especially when encountering extreme values in the data [14]. They also do not demonstrate the capability and robustness to solve non-linear and complex relationships [15].

The last group of models available for TBM performance prediction is AI and machine learning (ML) [16–21]. Many researchers have proved that these techniques can effectively solve science and engineering problems [22–26]. For example, Salimi et al. [27] developed models for predicting the FPI of TBM using genetic programming (GP) and classification and regression tree (CART) techniques. The model generated by CART demonstrated a higher superiority over

the GP model with a coefficient of determination (R^2) = 0.91 over 0.86. Mahdevari et al. [28] proposed a support vector regression (SVR) model to predict the PR of TBM. The study was conducted on 150 datasets from the Queens Tunnel using rock mass, rock material, and machine properties. The results of the SVR showed that this AI technique can provide a high model capability ($R^2 = 0.949$). In another investigation, a gene expression programming equation was suggested by Armaghani et al. [15] for solving TBM performance. They reported an easy-to-use equation as well as an acceptable performance for predicting TBM PR values. Yagiz et al. [29] conducted a study to propose a PR prediction model using an artificial neural network (ANN) methodology. Yagiz and Karahan [30] performed another study with good results to estimate the TBM performance using a particle swarm optimization system. Yang et al. proposed a hybrid tree-based technique: the improved sparrow search algorithm-gradient boosting regression tree, to solve the problem of predicting TBM PR. The results showed their model performed well in this topic [31]. Overall, AI and ML models have an acceptable capacity in predicting TBM performance.

In this study, our idea is to examine the effects of rock properties (mass and material) on TBM performance, specifically PR values. Previous studies typically consider a component related to TBM machines, such as revolutions per minute or cutter force, as an input parameter. However, since the idea is to predict TBM performance, of course, before the construction process, there is no available TBM data. The only information available is from the site investigation phase, which includes rock or soil properties or a combination of the two [32]. Using these two available variables to predict PR, before the site investigation phase, is more reasonable and practical in tunnel construction. Therefore, we developed two predictive models: the group method of data handling (GMDH) and ANN, to evaluate and predict the performance of TBM. The most effective parameters, as predictors to forecast TBM PR, are rock mass and rock material. The developed models will be compared in terms of their performance indices and powers of prediction, and eventually, the best intelligent predictive model will be determined and used in the area of TBM performance prediction.

The rest of the paper is organized as follows:

Section 2 introduces the concept and principle of the machine learning models; Section 3 illustrates the engineering background and data source; Section 4 describes the process of modeling; Section 5 discusses the results of modeling; Section 6 explains the future work; Section 7 summarizes the main conclusions of the paper.

2. Model background

2.1. Artificial neural network (ANN)

An Artificial Neural Network (ANN) is an AI system that was designed to mimic certain characteristics of the human nervous system [33]. Unlike traditional AI models, ANNs can learn patterns and relationships from training data and can process information in a manner similar to the way the human brain does [34]. An ANN consists of artificial neurons, which receive signals and pass them through an activation function to produce an output [35]. These outputs are then

used as inputs for subsequent neurons. ANNs can be trained repeatedly to improve their performance and during this process, the architecture and connection weights of the network are modified iteratively to reduce errors in the predicted data [36]. The net weighted input (net_j) for each node (e.g., neuron j) will be calculated by (Fig. 1):

$$net_j = \sum_{i=1}^n x_i w_{ij}^{-\theta_j} \quad (1)$$

where the two parameters x_i and w_{ij} indicate each input signal and its corresponding weight, respectively, while n is the number of incoming signals that transmit to the processing neuron j . The threshold applied to neuron j is represented by the parameter θ_j . An activation function is applied to this net input. This process is known as the "training approach". Subsequently, the output is compared with the actual value, and the resulting error passes back across the network, allowing the individual weights to be fine-tuned.

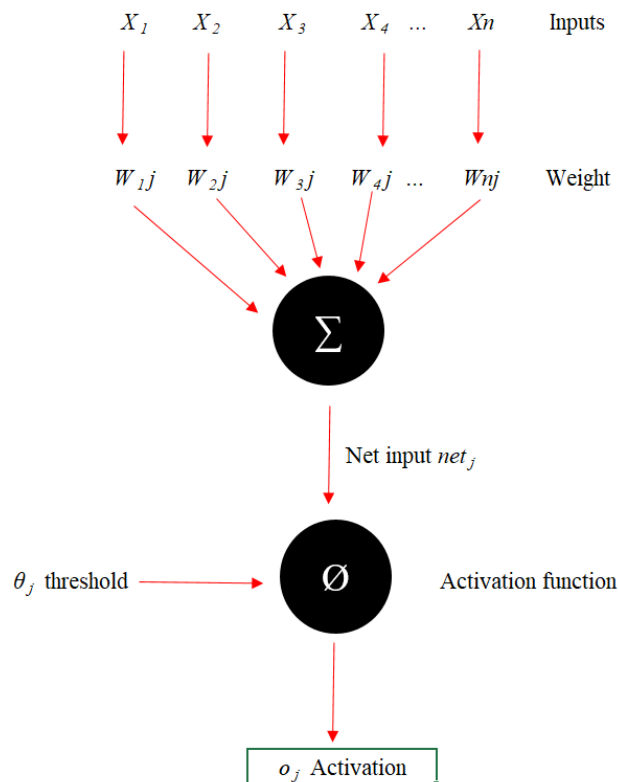


Fig. 1. A typical neuron's architecture in ANN.

2.2. Group method of data handling (GMDH)

GMDH is a combination of a few algorithms to forecast the function or relationship of several predictors and to solve problems [37,38]. It is a neural network algorithm that allows the software to learn the relationship between the predictors and the desired output. The GMDH algorithm allows the analysis of several mathematical equations, i.e., polynomial, non-linear, and probabilistic, to discover the most ideal model for prediction purposes [39]. In GMDH, the system is run by layers of neurons, and the number of neurons in a layer is defined by the number of inputs inserted into the system. To elucidate, the number of neurons is denoted by x ,

and since the system considers all pairwise combinations for input variables, the number of neurons is equal to $\binom{x}{2}$ [40]. The GMDH model can be constructed to forecast the output value based on any inputs are given (Fig. 2):

$$\hat{Y} = \hat{f}(x_{i1}, x_{i2}, x_{i3}, \dots, x_{iq}) \quad (i = 1, 2, 3, \dots, q) \quad (2)$$

where \hat{Y} is the output, \hat{f} is a function, x is an input vector, and i is the number of observations (from 1 to q^{th} observation). More details related to GMDH, its effective parameters, and the modeling process can be found elsewhere (e.g., [41]).

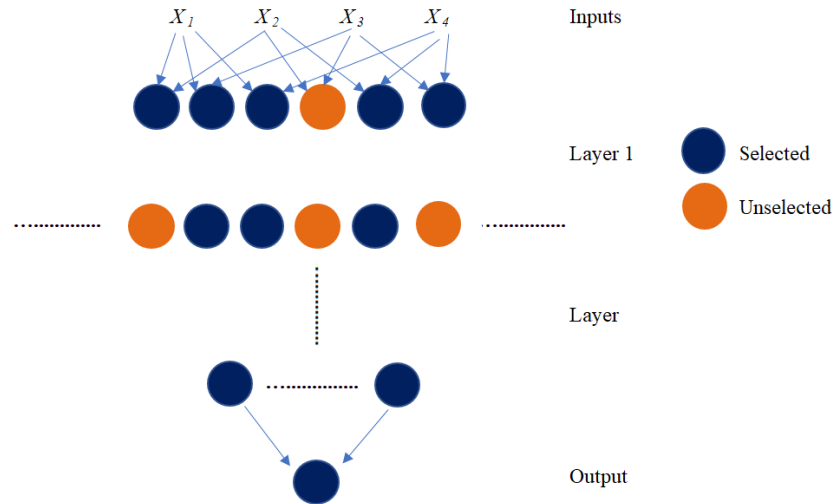


Fig. 2. A GMDH model with four input variables.

2.3. Performance indices

To compare the accuracy of AI models, several performance indices are normally used to assess the precision of the models. Hence, five performance indices, including R^2 , root mean square error (RMSE), the variance accounted for (VAF, %), mean absolute error (MAE), and a20-index, are selected. R^2 is one of the performance indices to describe the global fit of the model. R^2 is the proportion of variance of the output that is forecasted by using predictors in the model. The ideal value of R^2 would be 1. The RMSE is a standard deviation of estimation error at which it evaluates how much the error spreads from its original best fit model. The ideal RMSE would be 0, meaning that all the predicted values are the same as the observed values. The VAF is described as how much variability in the data can be expressed by a model. The VAF is expressed in percentages, where a higher percentage indicates a better accuracy of the model. The MAE is the average of errors between predictions and observations over a number of datasets. The a20-index is a performance index that is similar to the MAE where it measures the deviation of a predicted value from an actual value. The ideal value of the a20-index is 1. The formulas for the mentioned indices are presented as follows:

$$R^2 = 1 - \frac{\sum_{i=1}^n (y_i - \hat{y}_i)^2}{\sum_{i=1}^n (y_i - \bar{y})^2} \quad (3)$$

$$\text{RMSE} = \sqrt{\frac{1}{n} \sum_{i=1}^n (y_i - \hat{y}_i)^2} \quad (4)$$

$$\text{VAF} = \left(1 - \frac{\text{var}(y_i - \hat{y}_i)}{\text{var}(y_i)}\right) \times 100\% \quad (5)$$

$$\text{MAE} = \frac{1}{n} \sum_{i=1}^n |y_i - \hat{y}_i| \quad (6)$$

$$\text{a20 - index} = \frac{m20}{n} \quad (7)$$

where y_i , \hat{y}_i and \bar{y} are measured, predicted, and mean values of TBM performance, respectively, n is the number of data samples, and $m20$ is the number of datasets that have a value of 0.8 to 1.2 for the ratio of measured to predicted values.

3. Study area and data samples

Selangor is one of the states in Malaysia that has the highest population density in the country. As such, there exists a large demand for water supply to support the residents in the area. The Pahang Selangor Row Water Transfer (PSRWT) tunnel project aims to divert water supply from Pahang to Selangor through a tunnel excavated using three TBMs. The objective of this project is to transfer 1890 million liters of water diverted from the Sematan River in Pahang to the South Klang Valley region in Selangor. The flow of the Sematan River is extracted from the reservoir by the pumping station next to the intake and connected to a connecting basin at the tunnel inlet via a pipe. The connecting basin diverts the raw water to the outlet connecting basin with the aid of gravity flow.

PSRWT tunnel project is located in a Main Range Granite region, where quartz dykes with clay were observed in the region. Quartz veins were also noticed at the half bottom of the tunnel. The route of the PSRWT tunnel is broken up into four sections based on the type of rock in each area. Section 1, from Ch. 0.8 km to Ch. 3.8 km, is made up of Devonian sedimentary rocks that have been slightly metamorphosed. It is mostly black shale to schist, but it has been folded a lot because granitic rocks moved in during the Triassic period. This section has the most overburden (cover) at 240 m. Section 2, from Ch. 3.8 km to Ch. 12.5 km, is made up of coarse-grained granitic rocks that the overburden is between 33 m and 483 m. Section 3, from Ch. 12.5 km and Ch. 27.0 km, the tunnel route is made up of coarse to medium-grained granitic rocks. This section has the most overburden at 1390 m. This is where the last part of the PSRWT tunnel, which is made of weathered granite from the Main Range, is found. It's between Ch. 27.0 km and Ch. 44.6 km.

The tunnel runs through six major faults: Karak (Ch. 2.5 km), Krau (Ch. 12.45 km), Bukit Tinggi (Ch. 19.15 km), Lepoh (Ch. 28.6 km), Kongkoi (Ch. 31.35 km), and Tekali (Ch. 39.0 km) [42]. In places near faults, rocks have low strength. Weathered zones ranging moderately to highly have been detected in the PSRWT tunnel project's fault zones. The PSRWT tunnel project is mainly underlain by Main Range Granite.

To make this study feasible, there is a need to prepare a database consisting of rock mass and material properties (model inputs) as well as TBM PR (model output). Therefore, field observations were conducted to collect rock mass properties in the tunnel. During the field observations for the rock mass properties, several parameters such as the rock quality designation (RQD), the rock mass rating (RMR), and weathering zone (WZ) were observed. In the following, these rock mass properties will be described in detail.

RQD was introduced by Deere [43] to assess the quality of rock. RQD is a more sensitive assessment to appraise the quality of rock when compared to total core recovery. It is emphasized by many engineers that a higher value of RQD does not mean the strength of the rock is as high as well. Note that RQD only measures the quality of the rock itself. A total of 259 RQD values (259 panels) were collected, with an average of 34.11%, a minimum of 8.25%, and a maximum of 93.75%. Through all the sample data, it was quantified that the standard deviation of the 259 data samples is 23.1%. RMR was developed by the South African Council of Scientific and Industrial Research by Bieniawski [44]. There are six influencing factors that govern the RMR, which include uniaxial compressive strength (UCS), RQD, joint spacing, groundwater condition, and joint orientation. A higher RMR suggests that the rock has very good characteristics. RMR can be used to determine the preliminary cohesion and angle of internal friction of a certain rock formation. An average RMR value of 58.50 was observed from the total set of 259 data. A minimum rating of 45 was observed from the datasets from the PSRWT tunnel project, while a maximum rating of 93 was also noticed. After performing statistical analysis, a standard deviation of 12.12 was observed for RMR values. Rock mass weathering starts at the discontinuity or joint of the surface of the rock formation itself, as the joint will smoothen the weathering process and subsequently produce different zones for the weathering class. Weathering takes place when the less stable minerals break down and the discoloration of rock penetrates deeply inside the rock. In the collected data from the PSRWT tunnel, there are three weathered zones, i.e., fresh, slightly weathered, and moderately weathered in the collected data from the PSRWT tunnel. In the database, to give them a value, the authors decided to use a value of one for fresh, two for slightly weathered, and three for moderately weathered zones. It is important to note that in each panel, which was typically 10 m, PR values were recorded. The minimum, maximum, and average of the TBM PR values were recorded as 1.72 m/h, 5.06 m/h, and 2.96 m/h, respectively.

Together with field observation, laboratory tests were also carried out in this study to determine rock material properties. Two strength-based tests, i.e., UCS and Brazilian tensile strength (BTS), were conducted on the samples. An average value of 88.9 MPa was obtained for UCS tests, while 184 MPa and 40 MPa were recorded as maximum and minimum values, respectively. In addition, values of 7.23MPa, 4.69MPa, and 13.75MPa were obtained for the average, minimum, and maximum BTS results, respectively. To achieve the designed objective, the five parameters mentioned above, i.e., UCS, BTS, WZ, RMR, and RQD, were set as model inputs, and TBM PR was considered as a model output. A database with 259 data samples was prepared for the PR analysis. Figure 3 shows the linear correlation (Pearson's r) between the pairwise variables.

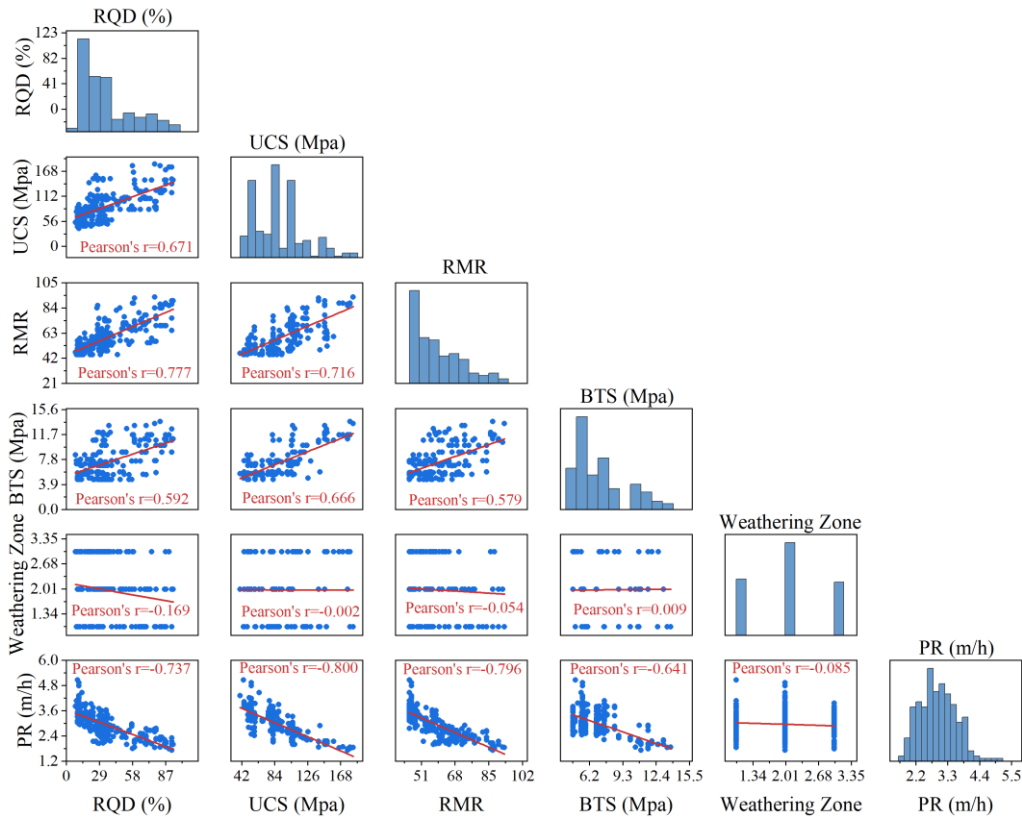


Fig. 3. The relationship between the pairwise variables.

4. Methodology

4.1. GMDH modeling

The AI techniques in this study (GMDH and ANN) were built to forecast TBM PR. As a first step, the independent and dependent variables should be normalized. Normalization aims to derive the database into a common scale without adjusting the difference in the range of the original database. Equation (8) illustrates the used formula for normalization purposes:

$$Y_{normalized} = \frac{Y - Y_{min}}{Y_{max} - Y_{min}} \quad (8)$$

where $Y_{normalized}$ is the normalized data, Y is the original dataset, Y_{min} is the minimum number in the dataset and Y_{max} is the dataset with the highest value. The next stage is to divide the whole database into two parts of training and testing for model construction and model assessment. Based on the literature, it was found that most of the researchers employed 80% of the datasets as training while the remaining 20% were allocated as testing data. Therefore, 80% of the entire dataset, including 207 data samples, were selected in the AI models to undergo training. The remaining 20%, including 52 data samples, were adopted to test the data.

In the modeling of GMDH, it is necessary to first identify the influencing factors of this technique which are the number of neurons and the number of layers. According to results obtained from neuron numbers, it was found that a neuron number equal to 12 (12N) receives the

best performance prediction for estimating TBM PR. Therefore, the next step in modeling is to determine the number of layers through another parametric study. Tables 1 and 2 present the results of performance indices for training and testing data samples where different numbers of layers (L) were applied. A ranking system, which was introduced by Zorlu et al. [45], was applied to the results. According to this ranking system, the most accurate results will get the highest rank value in each category. The rank values of training and testing models are presented in the last column of Tables 1 and 2, respectively. A summation of the training and testing sets should be done to have a final rank value for these models. Therefore, final rank values were computed as 70, 61, 58, 40, 51, 46, 64, 62, and 39 for 2L-12N, 3L-12N, 4L-12N, 5L-12N, 6L-12N, 7L-12N, 8L-12N, 9L-12N, and 10L-12N models, respectively. It is abundantly clear that the number layer of 2 has the highest accuracy in predicting the PR based on the obtained results of both training and testing sets. Fig. 4 shows the target and output of PR with errors procured from both the training and testing stages for the best GMDH model. It is important to mention that GMDH results are presented based on the correlation of coefficient or R^2 in Tables 1 and 2 while they are presented based on R^2 in Fig. 4.

Table 1

Performance indices and ranking system of GMDH layer for training dataset (12 neurons).

Model	Performance index					Rank					
	R	RMSE	VAF (%)	MAE	a-20	R	RMSE	VAF	MAE	a-20	Rank Value
2L-12N	0.9134	0.0775	80.5167	0.00344	0.70048	7	7	7	6	10	37
3L-12N	0.9203	0.0719	81.6970	0.00386	0.69565	8	9	9	3	9	38
4L-12N	0.9054	0.0792	77.5948	0.0018	0.66184	4	4	3	9	5	25
5L-12N	0.9044	0.0793	78.5915	0.00249	0.66667	3	3	5	8	6	25
6L-12N	0.8965	0.0803	75.2453	0.00387	0.64734	1	2	1	2	4	10
7L-12N	0.9214	0.0724	81.2065	0.00386	0.67633	9	8	8	4	7	36
8L-12N	0.9038	0.0811	78.9432	0.00373	0.68599	2	1	6	5	8	22
9L-12N	0.9090	0.0785	77.7428	0.00302	0.68599	6	6	4	7	8	31
10L-12N	0.9055	0.0786	77.4794	0.00387	0.66184	5	5	2	1	5	18

Table 2

Performance indices and ranking system of GMDH layer for testing dataset (12 neurons).

Model	Performance index					Rank					
	R	RMSE	VAF (%)	MAE	a-20	R	RMSE	VAF	MAE	a-20	Rank Value
2L-12N	0.9055	0.0767	73.7728	0.05776	0.69231	6	7	5	5	10	33
3L-12N	0.8854	0.0913	72.3109	0.06748	0.67308	4	3	4	3	9	23
4L-12N	0.9111	0.0793	77.6657	0.05605	0.63462	7	6	7	6	7	33
5L-12N	0.8781	0.0929	71.7538	0.07041	0.59615	2	2	3	2	6	15
6L-12N	0.9428	0.0754	82.39	0.05225	0.63462	9	8	8	9	7	41
7L-12N	0.8548	0.1027	52.5996	0.07894	0.59615	1	1	1	1	6	10
8L-12N	0.9215	0.0737	83.8994	0.05423	0.67308	8	9	9	7	9	42
9L-12N	0.9024	0.0799	77.473	0.05408	0.63462	5	5	6	8	7	31
10L-12N	0.8812	0.0913	69.7066	0.06404	0.65385	3	4	2	4	8	21

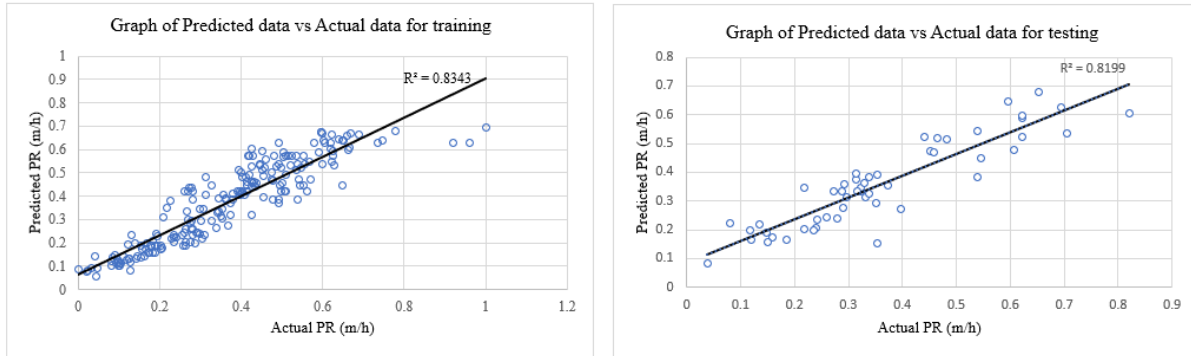


Fig. 4. Graph of predicted PR vs actual PR for training and testing datasets of the best GMDH model.

4.2. ANN modeling

To create an ANN model, the number of hidden layers, the number of nodes, and the transfer function must all be designed. In this study, the number of hidden layers was kept to a minimum to avoid overfitting the results. Overfitting is defined as the creation of an interpretation that is too similar or precise to a specific collection of data and therefore may fail to match additional data or accurately forecast future findings. As the number of hidden layers increases, the possibility of the occurrence of overfitting of data also increases. Therefore, we decided to only use a single hidden layer. On the other hand, to solve non-linear problems, the sigmoid transfer function achieved acceptable results according to previous studies [46]. Therefore, this transfer function was used for the ANN modeling part. For designing neuron numbers, several ANN models with different neuron numbers were constructed their results for training and testing parts are presented in Tables 3 and 4, respectively. Like GMDH modeling, rank values for each model and each section (i.e., training and testing) are shown in these tables. Then, the final rank values of 18, 37, 46, 55, 56, 63, 72, 59, and 56 were obtained for models with 1-9 neurons, respectively. The model, which has the highest accuracy in predicting TBM performance, is model 7N (with 7 numbers neurons). Therefore, we introduced this model to forecast TBM performance. In Fig. 5, differences between measured and predicted PR values for the testing part of the selected ANN model are displayed.

Table 3

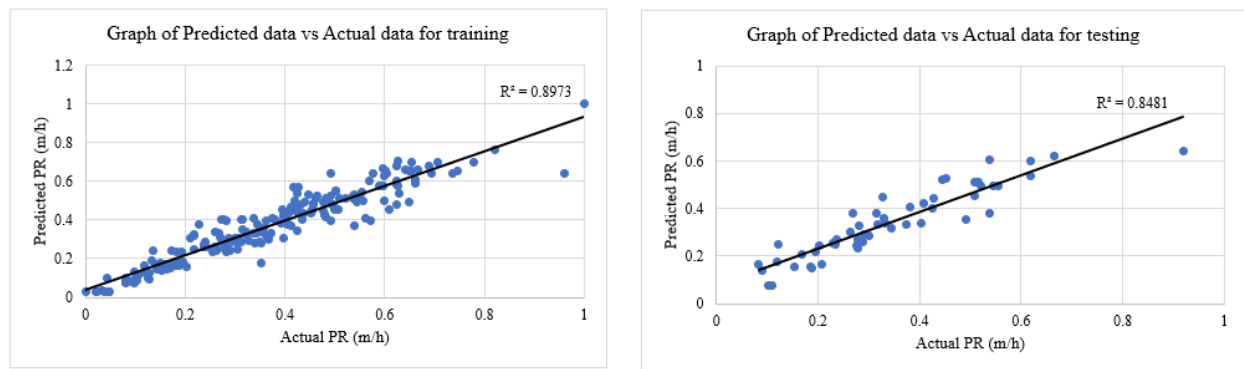
Performance indices and ranking system of the ANN models for the training part.

Model	Performance index					Rank					
	R	RMSE	VAF (%)	MAE	a-20	R	RMSE	VAF	MAE	a-20	Rank Value
1N	0.9125	0.0776	79.7337	0.00373	0.66667	1	1	1	1	1	5
2N	0.9219	0.0719	82.3433	0.00352	0.73913	2	2	2	2	3	11
3N	0.9303	0.0687	84.4259	0.00271	0.74396	5	5	5	7	2	24
4N	0.9295	0.0705	84.1871	0.00345	0.74396	4	4	4	3	6	21
5N	0.9280	0.0712	83.8243	0.0033	0.75845	3	3	3	4	4	17
6N	0.9347	0.0652	85.4856	0.00294	0.78261	6	6	6	6	5	29
7N	0.9473	0.0612	88.5332	0.00322	0.78744	8	8	8	5	8	37
8N	0.9441	0.0631	87.7911	0.00249	0.83575	7	7	7	8	7	36
9N	0.9581	0.0523	91.0399	0.00201	0.82126	9	9	9	9	9	45

Table 4

Performance indices and ranking system of the ANN models for testing part.

Model	Performance index					Rank					
	R	RMSE	VAF (%)	MAE	a-20	R	RMSE	VAF	MAE	a-20	Rank Value
1N	0.9011	0.0788	72.1582	0.06095	0.67308	2	3	2	2	4	13
2N	0.9178	0.0780	82.964	0.05672	0.75	5	4	6	3	8	26
3N	0.9014	0.0829	78.0805	0.05271	0.69231	3	2	5	7	5	22
4N	0.9267	0.0729	85.7628	0.05517	0.67308	7	6	9	5	7	34
5N	0.9311	0.0634	84.7808	0.05046	0.76923	8	9	8	8	6	39
6N	0.9335	0.0774	83.6527	0.05625	0.71154	9	5	7	4	9	34
7N	0.9209	0.0682	77.6562	0.04925	0.73077	6	8	4	9	8	35
8N	0.9120	0.0698	76.7197	0.05486	0.78846	4	7	3	6	3	23
9N	0.8395	0.1159	57.9587	0.08355	0.65385	1	1	1	1	7	11

**Fig. 5.** Graph of predicted PR vs actual PR for training and testing datasets of the best ANN model.

5. Results and discussion

In this study, to evaluate the effects of rock mass and material properties on TBM performance, two AI techniques i.e., ANN and GMDH, were selected and applied. Then, the most important parameters in each technique were designed properly and used in a series of parametric studies. After that, a ranking system was used to show a good way of selecting the best model among all constructed models. The ranking system considers the effects of all four performance indices not only one or two of them. Table 5 shows the results of ANN and GMDH models using only four input parameters ranking systems of both train and test models for the best models developed for each statistical and AI method. Based on this table, it is copiously clear that ANN is the best model to predict the PR of TBM in comparison with GMDH. It is clear that ANN was able to achieve a higher accuracy level and lower system error in forecasting TBM performance. The R of the training dataset for an ANN model (i.e., with 1 hidden layer and 7 neurons) has a value of 0.947, whereas, for testing, it has a value of 0.921. The value of R of ANN for both training and testing is higher than that of GMDH, which implies that ANN has a higher superiority. The RMSE obtained for the ANN model has a value of 0.061 and 0.068 for both train and test

models, while the value of MAE obtained is 0.003 and 0.049 for both train and test models. These two performance indices showed that the error for the ANN model is the lowest. Lastly, the VAF obtained from ANN has a value of 88.533% and 77.656% for both training and testing, which can be concluded that ANN will have a higher superiority over the two models developed.

In comparison, one research done by Eftekhari et al. (2010), the proposed ANN model had a coefficient of determination of 0.69 where the parameters considered were rock type, quartz content (q), UCS, BTS, RQD, RMR, Thrust, Torque, and R_s [47]. In another research, the developed ANN model had a R^2 of 0.72. The independent variables considered were primarily rock mass and rock material property i.e., UCS, RQD, joint per volume (J_v) as well as joint spacing (J_s). In another year, Armaghani et al. (2017) proposed an ANN model to predict both PR and AR of TBM by using rock mass and rock material properties as well as machine parameters. It was later illustrated that the ANN model has a coefficient of 0.666 and 0.706 [48]. In short, it is abundantly clear that the proposed ANN in this study has a higher accuracy in predicting TBM performance in comparison with the past model developed by other researchers.

The fact that ANN has a higher performance capacity in this study is most probably due to the nature of the ANN technique. Occasionally, a single ANN model will yield a better result than a hybrid model. Sada and Ikpeseni [49] used both the ANN and neuro-fuzzy models to predict steel machine performance, and it was noted that ANN has a higher superiority over neuro-fuzzy in their study. It can be highlighted that it was expected that neuro-fuzzy has a higher degree of performance, as neuro-fuzzy is a hybrid model of both ANN and fuzzy, but in some studies [49,50], it can be proven that a single model is always much better than a hybrid model. In this study, GMDH is an improved model of ANN; nevertheless, ANN has a higher performance capacity than GMDH.

The purpose of this study is to present a practical AI and ML technique that is fully based on rock material and mass properties for TBM PR prediction. The models proposed in this study were developed according to the results of four parameters, i.e., RMR, RQD, UCS, and BTS. These parameters can be easily determined during the site investigation phase using field observation and laboratory tests. Using the developed models, TBM PR can be estimated with a high accuracy level or low system error. The predicted values of TBM PR can be used to select the best features of the TBM machine for the excavation of the purposed tunnel. In addition, the scheduled plan for tunneling construction can be well-organized based on the obtained results from the developed models.

The limitations of the present work are the specific geological background and the low diversity of the dataset. The present study was carried out on the PSRWT project, in which the geological formation is granite. Hence, the model is only applicable for future TBM tunneling projects that are excavating through the granite region. On the other hand, the collected dataset only included information on rock mass and rock material properties, which limits the versatility of the model.

Table 5

The results of best models to predict TBM performance.

Category	Model	R ²	RMSE	VAF (%)	MAE	a-20
Train	ANN (1 hidden layer-7 Neurons)	0.897	0.061	88.533	0.003	0.787
	GMDH (2 Layer-12 Neurons)	0.843	0.077	80.517	0.003	0.700
Test	ANN (1 hidden layer-7 Neurons)	0.848	0.068	77.656	0.049	0.731
	GMDH (2 Layer-12 Neurons)	0.820	0.077	73.773	0.058	0.692

6. Recommendation for future work

In this research, the inputs considered are primarily rock mass and rock material properties, i.e., UCS, BTS, RMR, and RQD. It is recommended that future studies should consider the effects of other rock masses and material parameters. In addition, a wider range of the same parameters can be prepared to propose a ML model with a high level of generalization. To do this, results from various case studies can be gathered to establish a more comprehensive database for TBM performance prediction. It is advised to utilize hybrid ML/AI models to predict TBM performance. Many researchers [51–53] have stated that hybrid models can provide a better relationship in predicting TBM performance. For instance, a hybrid model integrating a support vector machine and some optimization algorithms, e.g., gray wolf optimization, moth flame optimization, and whale optimization algorithms, would provide better accuracy in terms of results in comparison with single models. The authors would also like to mention that ML/AI models should be moved to those more focused on physics relationships between inputs and output parameters. This would convert a pure ML model to a theory-based or physics-based ML model, which is more applicable in civil engineering, especially in the geomechanics and geotechnics fields.

7. Conclusions

In this study, to achieve a higher performance prediction of the PR of TBM which is the ultimate aim of prediction models, two ML/AI methods i.e., ANN and GMDH were proposed using four independent rock mass and material properties i.e., UCS, BTS, RQD, and RMR. The models were established on a dataset that was based on the PSRWT tunnel project in Malaysia. Several commonly used assessment metrics were used to examine the performance of each model. The results show that GMDH with two layers and 12 neurons is the best model to predict the PR with these four types of input. During the modeling in ANN, we found that the model with seven neurons is the best to forecast TBM PR. A ranking model was developed to compare the statistical model and these two AI methods. At the denouement, it was observed that ANN has the highest prediction performance, followed by GMDH. It was shown that a single ANN model occasionally performed much better than an improved model depending on the nature of the dataset. The developed ANN can be used in engineering cases that are with similar geological types to the current study.

Acknowledgments

The authors of this study wish to express their appreciation to the Universiti Malaya for supporting this study and making it possible.

Funding

This research received no external funding.

Conflicts of interest

The authors declare no conflict of interest.

Authors contribution statement

S.K.E., B.H.: Conceptualization; S.K.E.: Data curation; S.K.E., B.H., M.M.: Formal analysis; S.K.E., B.H., M.M., R.M.B.: Investigation; S.K.E., B.H., M.M., R.M.B.: Methodology; R.M.B.: Project administration; R.M.B.: Resources; S.K.E., B.H.: Software; M.M., R.M.B.: Supervision; M.M., R.M.B.: Validation; FA, S.K.E., B.H.: Visualization; S.K.E., B.H.: Roles/Writing – original draft; M.M., R.M.B.: Writing – review & editing.

References

- [1] Roxborough FF, Phillips HR. Rock excavation by disc cutter. *Int. J. Rock Mech. Min. Sci. Geomech. Abstr.*, vol. 12, Elsevier; 1975, p. 361–6.
- [2] Harandizadeh H, Armaghani D, Asteris, Panagiotis G. GA. TBM performance prediction developing a hybrid ANFIS-PNN predictive model optimized by imperialism competitive algorithm. *Neural Comput Appl* 2021:<https://doi.org/10.1007/s00521-021-06217-x>.
- [3] Jain P, Naithani AK, Singh TN. Performance characteristics of tunnel boring machine in basalt and pyroclastic rocks of Deccan traps - A case study. *J Rock Mech Geotech Eng* 2014;6:36–47. <https://doi.org/10.1016/j.jrmge.2013.11.003>.
- [4] Sanio HP. Prediction of the performance of disc cutters in anisotropic rock. *Int J Rock Mech Min Sci* 1985;22:153–61. [https://doi.org/10.1016/0148-9062\(85\)93229-2](https://doi.org/10.1016/0148-9062(85)93229-2).
- [5] Farmer IW, Glossop NH. Mechanics of disc cutter penetration. *Tunnels Tunn* 1980;12:22–5.
- [6] Sato K, Gong F, Itakura K. Prediction of disc cutter performance using a circular rock cutting ring. *Proc. 1st Int. mine Mech. Autom. Symp.*, 1991.
- [7] Rostami J, Ozdemir L. A new model for performance prediction of hard rock TBMs. *Proc. rapid Excav. tunneling Conf., SOCIETY FOR MINING, METALLOGY & EXPLORATION, INC;* 1993, p. 793.
- [8] Akbarzadeh M, Shaffiee Haghshenas S, Jalali SME, Zare S, Mikaeil R. Developing the Rule of Thumb for Evaluating Penetration Rate of TBM, Using Binary Classification. *Geotech Geol Eng* 2022;40:4685–703. <https://doi.org/10.1007/s10706-022-02178-7>.
- [9] Farrokh E, Rostami J, Laughton C. Study of various models for estimation of penetration rate of hard rock TBMs. *Tunn Undergr Sp Technol* 2012;30:110–23. <https://doi.org/10.1016/j.tust.2012.02.012>.

- [10] Khademi Hamidi J, Shahriar K, Rezai B, Rostami J. Performance prediction of hard rock TBM using Rock Mass Rating (RMR) system. *Tunn Undergr Sp Technol* 2010;25:333–45. <https://doi.org/10.1016/j.tust.2010.01.008>.
- [11] Hassanpour J, Rostami J, Zhao J. A new hard rock TBM performance prediction model for project planning. *Tunn Undergr Sp Technol* 2011;26:595–603.
- [12] Yagiz S. New equations for predicting the field penetration index of tunnel boring machines in fractured rock mass. *Arab J Geosci* 2017;10:33.
- [13] Jing L, Li J, Yang C, Chen S, Zhang N, Peng X. A case study of TBM performance prediction using field tunnelling tests in limestone strata. *Tunn Undergr Sp Technol* 2019;83:364–72.
- [14] Grima MA, Bruines PA VP. Modeling tunnel boring machine performance by neuro-fuzzy methods. *Tunn Undergr Sp Technol* 2000;15(3):260–269.
- [15] Armaghani DJ, Faradonbeh RS, Momeni E, Fahimifar A, Tahir MM. Performance prediction of tunnel boring machine through developing a gene expression programming equation. *Eng Comput* 2018;34:129–41.
- [16] Yang H, Wang Z, Song K. A new hybrid grey wolf optimizer-feature weighted-multiple kernel-support vector regression technique to predict TBM performance. *Eng Comput* 2020;<https://doi.org/10.1007/s00366-020-01217-2>.
- [17] Yang H, Wang H, Zhou X. Analysis on the rock–cutter interaction mechanism during the TBM tunneling process. *Rock Mech Rock Eng* 2016;49:1073–90.
- [18] Benardos AG, Kaliampakos DC. Modelling TBM performance with artificial neural networks. *Tunn Undergr Sp Technol* 2004;19:597–605. <https://doi.org/10.1016/j.tust.2004.02.128>.
- [19] Zhang C, Liang M, Song X, Liu L, Wang H, Li W, et al. Generative adversarial network for geological prediction based on TBM operational data. *Mech Syst Signal Process* 2021;162:108035. <https://doi.org/10.1016/j.ymssp.2021.108035>.
- [20] He B, Armaghani DJ, Lai SH. A Short Overview of Soft Computing Techniques in Tunnel Construction. *Open Constr Build Technol J* 2022;16.
- [21] Noori AM, Mikaeil R, Mokhtarian M, Haghshenas SS, Foroughi M. Feasibility of Intelligent Models for Prediction of Utilization Factor of TBM. *Geotech Geol Eng* 2020. <https://doi.org/10.1007/s10706-020-01213-9>.
- [22] Yang HQ, Zeng YY, Lan YF, Zhou XP. Analysis of the excavation damaged zone around a tunnel accounting for geostress and unloading. *Int J Rock Mech Min Sci* 2014;69:59–66. <https://doi.org/10.1016/j.ijrmms.2014.03.003>.
- [23] Zhou J, Shi X, Du K, Qiu X, Li X, Mitri HS. Feasibility of Random-Forest Approach for Prediction of Ground Settlements Induced by the Construction of a Shield-Driven Tunnel. *Int J Geomech* 2017;17:04016129. [https://doi.org/10.1061/\(asce\)gm.1943-5622.0000817](https://doi.org/10.1061/(asce)gm.1943-5622.0000817).
- [24] Yu A, Mei W, Han M. Deep learning based method of longitudinal dislocation detection for metro shield tunnel segment. *Tunn Undergr Sp Technol* 2021;113:103949. <https://doi.org/10.1016/j.tust.2021.103949>.
- [25] Eftekhari M, Eftekhari N. A Predictive Model for Estimating the TBM Penetration Rate Based on Hybrid ICA-ANN and DEA-AHP Algorithms. *Geotech Geol Eng* 2022;40:3191–209. <https://doi.org/10.1007/s10706-022-02086-w>.
- [26] Li G, Xue Y, Su M, Qiu D, Wang P, Liu Q, et al. Probabilistic Evaluation of Tunnel Boring Machine Penetration Rate Based on Case Analysis. *KSCE J Civ Eng* 2022;26:4840–50. <https://doi.org/10.1007/s12205-022-0128-z>.
- [27] Salimi A, Rostami J, Moormann C. Application of rock mass classification systems for performance estimation of rock TBMs using regression tree and artificial intelligence algorithms. *Tunn Undergr Sp Technol* 2019;92:103046.

- [28] Mahdevari S, Shahriar K, Yagiz S, Akbarpour Shirazi M. A support vector regression model for predicting tunnel boring machine penetration rates. *Int J Rock Mech Min Sci* 2014;72:214–29. <https://doi.org/10.1016/j.ijrmms.2014.09.012>.
- [29] Yagiz S, Gokceoglu C, Sezer E, Iplikci S. Application of two non-linear prediction tools to the estimation of tunnel boring machine performance. *Eng Appl Artif Intell* 2009;22:808–14.
- [30] Yagiz S, Karahan H. Prediction of hard rock TBM penetration rate using particle swarm optimization. *Int J Rock Mech Min Sci* 2011;48:427–33. <https://doi.org/10.1016/j.ijrmms.2011.02.013>.
- [31] Yang H, Liu X, Song K. A novel gradient boosting regression tree technique optimized by improved sparrow search algorithm for predicting TBM penetration rate. *Arab J Geosci* 2022;15. <https://doi.org/10.1007/s12517-022-09665-4>.
- [32] Jain P, Naithani AK, Singh TN. Estimation of the performance of the tunnel boring machine (TBM) using uniaxial compressive strength and rock mass rating classification (RMR)—A case study from the Deccan traps, India. *J Geol Soc India* 2016;87:145–52. <https://doi.org/10.1007/s12594-016-0382-0>.
- [33] Yusuf A, Abdullahi M, Sadiku S, Aguwa JI, Alhaji B, Folorunso TA. Modelling slump of concrete containing natural coarse aggregate from bida environs using artificial neural network. *J Soft Comput Civ Eng* 2021;5:19–38. <https://doi.org/10.22115/SCCE.2021.268839.1272>.
- [34] Keerthi Gowda BS, Easwara Prasad GL, Velmurugan R. Prediction of Mechanical Strength Attributes of Coir/Sisal Polyester Natural Composites by ANN. *J Soft Comput Civ Eng* 2020;4:79–105. <https://doi.org/10.22115/scce.2020.226219.1200>.
- [35] Dreyfus G. *Neural networks: methodology and applications*. Springer, Berlin, Heidelberg; 2005.
- [36] Gokkus U, Yildirim MS, Yilmazoglu A. Prediction of Concrete and Steel Materials Contained by Cantilever Retaining Wall by Modeling the Artificial Neural Networks. *J Soft Comput Civ Eng* 2018;2:47–61. <https://doi.org/10.22115/SCCE.2018.137218.1078>.
- [37] Guido G, Haghshenas SS, Haghshenas SS, Vitale A, Astarita V, Park Y, et al. Evaluation of Contributing Factors Affecting Number of Vehicles Involved in Crashes Using Machine Learning Techniques in Rural Roads of Cosenza, Italy. *Safety* 2022;8. <https://doi.org/10.3390/safety8020028>.
- [38] Guido G, Haghshenas SS, Haghshenas SS, Vitale A, Gallelli V, Astarita V. Development of a binary classification model to assess safety in transportation systems using GMDH-type neural network algorithm. *Sustain* 2020. <https://doi.org/10.3390/SU12176735>.
- [39] Morosini AF, Haghshenas SS, Haghshenas SS, Choi DY, Geem ZW. Sensitivity analysis for performance evaluation of a real water distribution system by a pressure driven analysis approach and artificial intelligence method. *Water (Switzerland)* 2021. <https://doi.org/10.3390/w13081116>.
- [40] Dag O, Yozgatligil C. GMDH: An R Package for Short Term Forecasting via GMDH-Type Neural Network Algorithms. *R J* 2016;8:379.
- [41] Ivakhnenko AG, Ivakhnenko GA. The review of problems solvable by algorithms of the group method of data handling (GMDH). *Pattern Recognit Image Anal C/C Raspoznavaniye Obraz I Anal Izobr* 1995;5:527–35.
- [42] Nordin Z. Planning and Construction of Pahang-Selangor Raw Water Transfer (PSRWT) Tunnel. *Semin. Tunnels Undergr. Struct.* 2-4 Sept. KUALA LUMPUR, Malaysia., 2014.
- [43] Deere DU. Technical description of rock cores for engineering purpose. *Rock Mech Engineer-Ring Geol* 1964;1:17–22.
- [44] Bieniawski ZT. Engineering classification of jointed rock masses. *Civ Eng South Africa* 1973;15.
- [45] Zorlu K, Gokceoglu C, Ocakoglu F, Nefeslioglu HA, Acikalin S. Prediction of uniaxial compressive strength of sandstones using petrography-based models. *Eng Geol* 2008;96:141–58. <https://doi.org/10.1016/j.enggeo.2007.10.009>.

- [46] Zhang H, Zhou J, Armaghani DJ, Tahir MM, Pham BT, Huynh V Van. A combination of feature selection and random forest techniques to solve a problem related to blast-induced ground vibration. *Appl Sci* 2020;10. <https://doi.org/10.3390/app10030869>.
- [47] Abolhosseini H, Hashemi M, Ajalloeian R. Evaluation of geotechnical parameters affecting the penetration rate of TBM using neural network (case study). *Arab J Geosci* 2020;13. <https://doi.org/10.1007/s12517-020-5183-5>.
- [48] Armaghani DJ, Mohamad ET, Narayanasamy MS, Narita N, Yagiz S. Development of hybrid intelligent models for predicting TBM penetration rate in hard rock condition. *Tunn Undergr Sp Technol* 2017;63:29–43. <https://doi.org/10.1016/j.tust.2016.12.009>.
- [49] Sada SO, Ikpeseni SC. Evaluation of ANN and ANFIS modeling ability in the prediction of AISI 1050 steel machining performance. *Heliyon* 2021;7:e06136. <https://doi.org/10.1016/j.heliyon.2021.e06136>.
- [50] Armaghani, D. J., & Asteris PG. A comparative study of ANN and ANFIS models for the prediction of cement-based mortar materials compressive strength. *Neural Comput Appl* 2020:DOI: <https://doi.org/10.1007/s00521-020-05244-4>.
- [51] Armaghani DJ, Koopialipoor M, Marto A, Yagiz S. Application of several optimization techniques for estimating TBM advance rate in granitic rocks. *J Rock Mech Geotech Eng* 2019;11:779–89. <https://doi.org/10.1016/j.jrmge.2019.01.002>.
- [52] Zhou J, Dai Y, Khandelwal M, Monjezi M, Yu Z, Qiu Y. Performance of Hybrid SCA-RF and HHO-RF Models for Predicting Backbreak in Open-Pit Mine Blasting Operations. *Nat Resour Res* 2021;30:4753–71. <https://doi.org/10.1007/s11053-021-09929-y>.
- [53] Momeni E, He B, Abdi Y, Jahed Armaghani D. Novel Hybrid XGBoost Model to Forecast Soil Shear Strength Based on Some Soil Index Tests. *Comput Model Eng Sci* 2023:1–24. <https://doi.org/10.32604/cmesci.2023.026531>.